

King : A

Zusammensetzung: 100% Trevira CS® (Polyester)
 Gewicht: ca. 410g/m
 Breite: 140cm
 Lichtechtheit: 5-6 Note (ISO 105-B02)
 Reibechtheit: nass: 4-5 / trocken: 4-5
 Scheuerfestigkeit: 100.000 Touren (Martindale)
 Brandverhalten: DIN EN 1021: Teil 1/Teil 2
 NFP 92-503/504 M1

Composition: 100% Trevira CS® (Polyester)
 Weight: approx. 410g/m
 Width: 140cm
 Light fastness: value 5-6 (ISO 105-B02)
 Fastness to rubbing: wet: 4-5 / dry: 4-5
 Abrasion resistance: 100,000 rubs (Martindale)
 Flammability: DIN EN 1021: Part 1/Part 2
 NFP 92-503/504 M1



2311 Balbi



0235 Etna



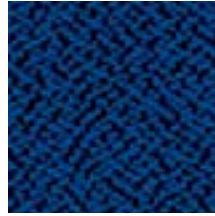
0265 Vesuv



0268 Nil



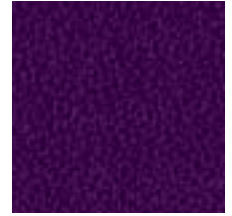
0232 Aquilia



0231 Spika



0266 Tigris



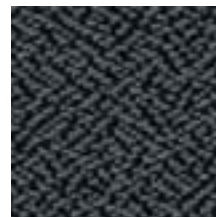
2313 Firenze



2331 Riva



0234 Goya



0237 Dema

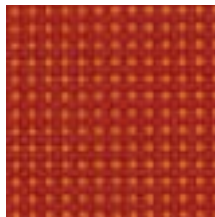


0238 Nigra

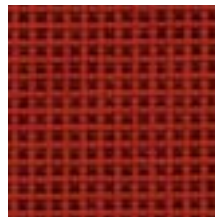
King Plus : A

Zusammensetzung: 100% Trevira CS® (Polyester)
 Gewicht: ca. 365g/m
 Breite: 140cm
 Lichtechtheit: Note 6 (ISO 105-B02)
 Reibechtheit: nass: 4-5 / trocken: 4-5
 Scheuerfestigkeit: 80.000 Touren (Martindale)
 Brandverhalten: DIN EN 1021: Teil 1/Teil 2
 B1 IMO A 652 (16)

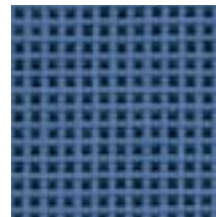
Composition: 100% Trevira CS® (Polyester)
 Weight: approx. 365g/m
 Width: 140cm
 Light fastness: value 6 (ISO 105-B02)
 Fastness to rubbing: wet: 4-5 / dry: 4-5
 Abrasion resistance: 80,000 rubs (Martindale)
 Flammability: DIN EN 1021: Part 1/Part 2
 CRIB 5 IMO A 652 (16)



2611 Lava



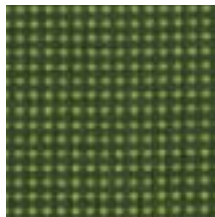
2610 Fire



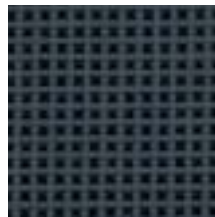
2621 Cielo



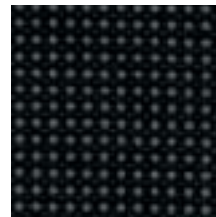
2620 Fjord



2632 Meadow



2601 Dust

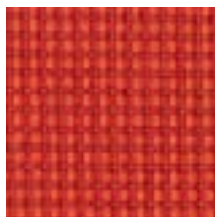


2600 Vulcano

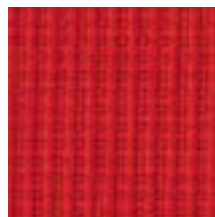
Relax : A

Zusammensetzung: 100% Trevira CS® (Polyester)
 Gewicht: ca. 480g/m, Breite: 140cm
 Lichtechtheit: Note 5-6 (EN ISO 105-B02)
 Pilling: Note 5 (EN ISO 12945/2)
 Reibechtheit: nass: 4-5 / trocken: 4-5 (EN ISO 105-X12)
 Scheuerfestigkeit: 100.000 Touren
 (Martindale; DIN EN ISO 12947)
 Brandverhalten: DIN EN 1021: Teil 1/Teil 2
 IMO Res. A.652 (16), DIN 4102-B1, BS 7176 Medium Hazard

Composition: 100% Trevira CS® (Polyester)
 Weight: approx. 480g/m, Width: 140cm
 Light fastness: value 5-6 (EN ISO 105-B02)
 Pilling: value 5 (EN ISO 12945/2)
 Fastness to rubbing: wet: 4-5 / dry: 4-5 (EN ISO 105-X12)
 Abrasion resistance: 100,000 rubs
 (Martindale; DIN EN ISO 12947)
 Flammability: DIN EN 1021: Part 1/Part 2
 IMO Res. A.652 (16), CRIB 5, BS 7176 Medium Hazard



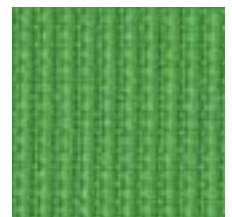
2711 Sunflower



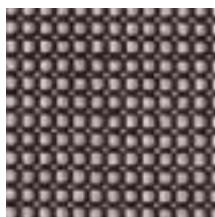
2710 Cherry



2720 Butterfly



2730 Nature



2702 Piano



2701 Granite



2700 Nighttime

Charlotta : A

Zusammensetzung: 60% Viskose/40% Wolle
 Gewicht: ca. 570 g/m
 Breite: 140 cm
 Lichtechtheit: Note 6 (ISO 105-B02)
 Reibechtheit: nass: 4 / trocken: 4
 Scheuerfestigkeit: 50.000 Touren (Martindale)
 ⚡ = leitfähig
 Brandverhalten: DIN EN 1021: Teil 1/Teil 2

Composition: 60% Viscose/40% Wool
 Weight: approx. 570 g/m
 Width: 140 cm
 Light fastness: value 6 (ISO 105-B02)
 Fastness to rubbing: wet: 4 / dry: 4
 Abrasion resistance: 50,000 rubs (Martindale)
 ⚡ = conductive
 Flammability: DIN EN 1021: Part 1/Part 2



0521 (0421)
Bordeaux



0504 (0404)
Corinth



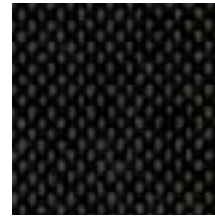
0502 (0402)
Indigo



0508 Aqua



0575 Mermaid



0501 (0403)
Mocca



0516 Charcoal



0511 (0411)
Black

Valencia : A

Zusammensetzung: Kunstleder
 Trägergewebe: 100% Polyester,
 Beschichtung: 100% PVC
 Blut-, urin- und ölbeständig, schwer entflammbar
 Gewicht: ca. 900 g/m
 Breite: 140 cm
 Lichtechtheit: Note 6 (ISO 105-B02)
 Scheuerfestigkeit: 50.000 Touren (Martindale)
 Brandverhalten: DIN EN 1021: Teil 1/Teil 2

Composition: Vinyl
 Base fabric: 100% Polyester
 Coating: 100% PVC
 Blood, urine and oil resistant, flame retardant
 Weight: approx. 900 g/m
 Width: 140 cm
 Light fastness: value 6 (ISO 105-B02)
 Abrasion resistance: 50,000 rubs (Martindale)
 Flammability: DIN EN 1021: Part 1/Part 2



3202 Rot/Red



3221 Delft



3220 Marine



3205 Weiß/White



3208 Titan



3200 Schwarz/
Black